

MAGAZINE (1.2m, 1.5m, 1.8M RODS)				MAGAZINE (1.2m, 1.5m, 1.8M RODS)			
ITEM	PART NUMBER	DESCRIPTION	QTY	ITEM	PART NUMBER	DESCRIPTION	QTY
1	MT9111 4363 62	BRACKET	1	16	MT3128 3142 77	NYLON CLOTH	1
2	MT3128 2400 00	BUSHING	2	17	MT3128 3146 95	SHAFT 1.5m ROD	1
3	MT3128 3142 91	PROTECTION	1	17.1	MT3127 3142 93	SHAFT 1.8m ROD	1
4	MT3128 2398 00	RING	1	18	MT3128 3142 032	ST32 SEGMENT (11 Rod)	2
5	MT0665 9100 16	WIPER	2	18.1	MT3128 3142 038	ST38 SEGMENT (10 Rod)	2
6	MT3128 2401 00	RING	1	18.2	MT3128 3142 045	ST45 SEGMENT (9 Rod)	2
7	MT3128 2401 00W	SEALING WASHER	1	19	MT3128 3217 32	WHEEL SENSOR RHS1132	1
8	MT9111 4363 62W	WASHER	1	19.1	MT3128 3217 45	WHEEL SENSOR RHS0945	1
9	MT0544 2162 00	GREASE NIPPLE	1	20	MT9111 3739 12	SENSOR SET	1
10	MT3128 3142 85	BRACKET	1	21	MT3128 3145 82BK	BOLT KIT	1
11	MT3222 3166 07	TURNING CYLINDER (Service ex.)	0	22	MT3128 3142 BK	BOLT KIT - SEGMENT	1
12	MT3128 2400 002	BUSHING	1	23	MT3128 3146 95BK	BOLT KIT - SHAFT	1
13	MT3128 3141 11	WASHER	1	24	MT1132 RHS 18C	RHS11 ST32 1.8M w. ST32 segm.	1
14	MT3128 3142 71	GABLE PLATE	1	24.1	MT1038 RHS 18C	RHS10 ST38 1.8M w. ST38 segm.	1
15	MT3128 3142 69	GABLE PLATE	1	24.2	MT0945 RHS 18C	RHS09 ST45 1.8M w. ST45 segm.	1

MAGAZINE (1.5m, 1.8M RODS)				MAGAZINE (1.5m, 1.8M RODS)			
ITEM	PART NUMBER	DESCRIPTION	QTY	ITEM	PART NUMBER	DESCRIPTION	QTY
1	MT9111 4363 62E	BRACKET	1	16	MT3128 3142 77E	NYLON WEAR DISC	1
2	MT3128 2400 00	BUSHING	2	17	MT3128 3146 95	SHAFT 1.5m ROD	1
3	MT3128 3142 91E	PROTECTION	1	17.1	MT3127 3142 93	SHAFT 1.8m ROD	1
4	MT3128 2398 00	RING	2	18	MT3128 3142 3215	ST32 SEGMENT (15 Rod)	2
5	MT0665 9100 16	WIPER	3	18.1	MT3128 3142 3814	ST38 SEGMENT (14 Rod)	2
6	MT3128 2401 00	RING	1	18.2	MT3128 3142 4513	ST45 SEGMENT (13 Rod)	2
7	MT3128 2401 00W	SEALING WASHER	1	19	MT3128 3217 515	WHEEL SENSOR RHS1532	1
8	MT9111 4363 62W	WASHER	2	19.1	MT3128 3217 514	WHEEL SENSOR RHS1438	1
9	MT0544 2162 00	GREASE NIPPLE	2	19.2	MT3128 3217 513	WHEEL SENSOR RHS1345	1
10	MT3128 3142 85E	BRACKET	1	20	MT9111 3739 12	SENSOR SET	1
11	MT3128 3142 91F	PROTECTION	1	21	MT3128 3145 82BK	BOLT KIT	1
12	MT3222 3166 07	TURNING CYLINDER (Service ex.)	0	22	MT3128 3146 95BK	BOLT KIT - SHAFT	1
13	MT3128 2400 002	BUSHING	1	23	MT3128 3142 BK	BOLT KIT - SEGMENT	1
14	MT3128 3142 695	GABLE PLATE	1	24	MT1532 RHS 18C	RHS15 ST32 1.8M w. ST32 segm.	1
15	MT3128 3142 71E	GABLE PLATE	1	24.1	MT1438 RHS 18C	RHS14 ST38 1.8M w. ST38 segm.	1
				24.2	MT1345 RHS 18C	RHS13 ST45 1.8M w. ST45 segm.	1

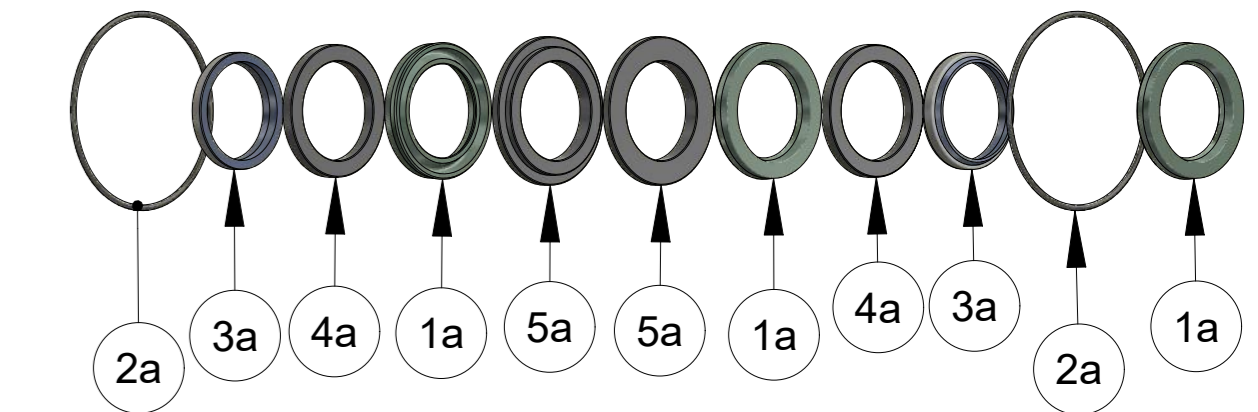
MT RHS13/09 MAGAZINE

MAINTENANCE TECHNIQUE
UNDERGROUND DRILL RELIABILITY

MT Parts: 0407 059 610
1 Hailey Circuit, Roseworthy S.A. 5331
171 Dugan Street, Kalgoorlie W.A. 6430
parts@mtunderground.com
www.mtunderground.com

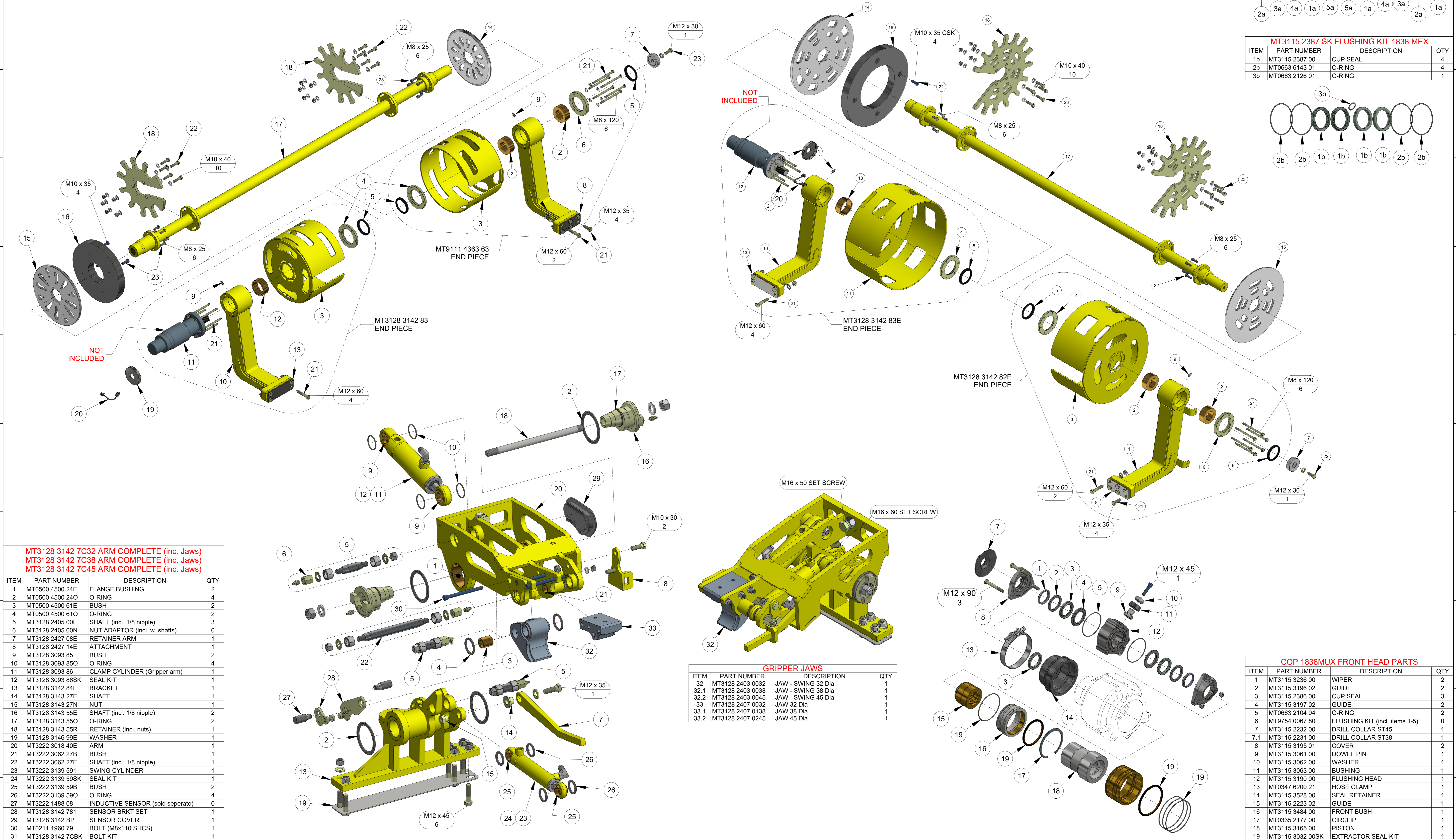
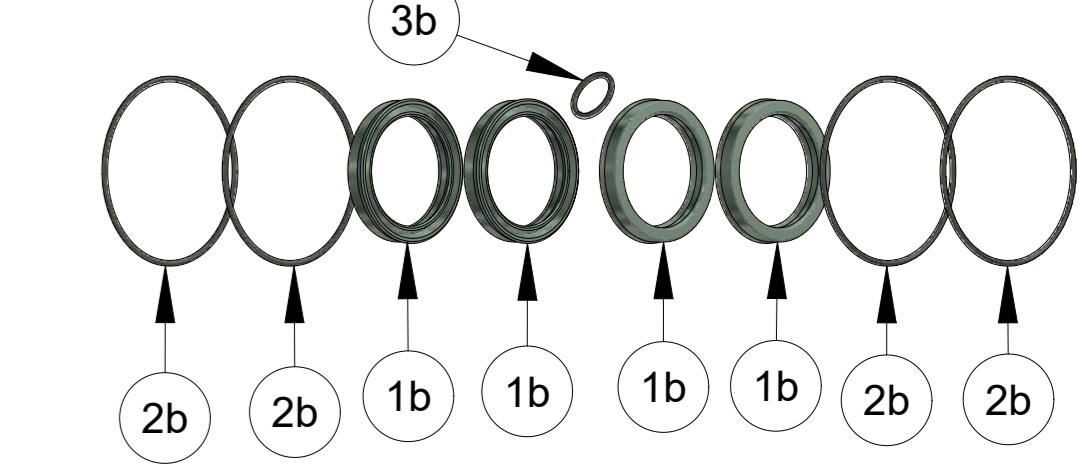
MT9754 0067 80 FLUSHING KIT 1838 MUX

ITEM	PART NUMBER	DESCRIPTION	QTY
1a	MT3115 2386 00	CUP SEAL	3
2a	MT0663 2104 94	O-RING	2
3a	MT3115 2326 00	WIPER	2
4a	MT3115 3196 02	GUIDE	2
5a	MT3115 3197 02	GUIDE	2



MT3115 2387 SK FLUSHING KIT 1838 MEX

ITEM	PART NUMBER	DESCRIPTION	QTY
1a	MT3115 2387 00	CUP SEAL	4
2b	MT0663 6143 01	O-RING	4
3b	MT0663 2126 01	O-RING	1



MT3128 3142 7C32 ARM COMPLETE (inc. Jaws)
MT3128 3142 7C38 ARM COMPLETE (inc. Jaws)
MT3128 3142 7C45 ARM COMPLETE (inc. Jaws)

ITEM	PART NUMBER	DESCRIPTION	QTY
1	MT0500 4500 24E	FLANGE BUSHING	2
2	MT0500 4500 24O	O-RING	4
3	MT0500 4500 61E	BUSH	2
4	MT0500 4500 61O	O-RING	2
5	MT3128 2405 00E	SHAFT (incl. 1/8 nipple)	3
6	MT3128 2405 00N	NUT ADAPTOR (incl. w. shafts)	0
7	MT3128 2427 08E	RETAINER ARM	1
8	MT3128 2427 14E	ATTACHMENT	1
9	MT3128 3093 85	BUSH	2
10	MT3128 3093 85O	O-RING	4
11	MT3128 3093 86	CLAMP CYLINDER (Gripper arm)	1
12	MT3128 3093 86SK	SEAL KIT	1
13	MT3128 3142 84E	BRACKET	1
14	MT3128 3143 27E	SHAFT	1
15	MT3128 3143 27N	NUT	1
16	MT3128 3143 55E	SHAFT (incl. 1/8 nipple)	2
17	MT3128 3143 55O	O-RING	2
18	MT3128 3143 55R	RETAINER (incl. nuts)	1
19	MT3128 3146 99E	WASHER	1
20	MT3222 3018 40E	ARM	1
21	MT3222 3062 27B	BUSH	1
22	MT3222 3062 27E	SHAFT (incl. 1/8 nipple)	1
23	MT3222 3139 591	SWING CYLINDER	1
24	MT3222 3139 59SK	SEAL KIT	1
25	MT3222 3139 59B	BUSH	2
26	MT3222 3139 59O	O-RING	4
27	MT3222 1488 08	INDUCTIVE SENSOR (sold separate)	0
28	MT3128 3142 781	SENSOR BRKT SET	1
29	MT3128 3142 BP	SENSOR COVER	1
30	MT0211 1960 79	BOLT (M8x110 SHCS)	1
31	MT3128 3142 7CBK	BOLT KIT	1

COP 1838MUX FRONT HEAD PARTS

ITEM	PART NUMBER	DESCRIPTION	QTY
1	MT3115 3236 00	WIPER	2
2	MT3115 3196 02	GUIDE	2
3	MT3115 2386 00	CUP SEAL	3
4	MT3115 3197 02	GUIDE	2
5	MT0663 2104 94	O-RING	2
6	MT9754 0067 80	FLUSHING KIT (incl. items 1-5)	0
7	MT3115 2232 00	DRILL COLLAR ST45	1
7.1	MT3115 2231 00	DRILL COLLAR ST38	1
8	MT3115 3195 01	COVER	2
9	MT3115 3061 00	DOWEL PIN	1
10	MT3115 3062 00	WASHER	1
11	MT3115 3063 00	BUSHING	1
12	MT3115 3190 00	FLUSHING HEAD	1
13	MT0347 6200 21	HOSE CLAMP	1
14	MT3115 3528 00	SEAL RETAINER	1
15	MT3115 2223 02	GUIDE	1
16	MT3115 3484 00	FRONT BUSH	1
17	MT0335 2177 00	CIRCLIP	1
18	MT3115 3165 00	PISTON	1
19	MT3115 3032 00SK	EXTRACTOR SEAL KIT	1